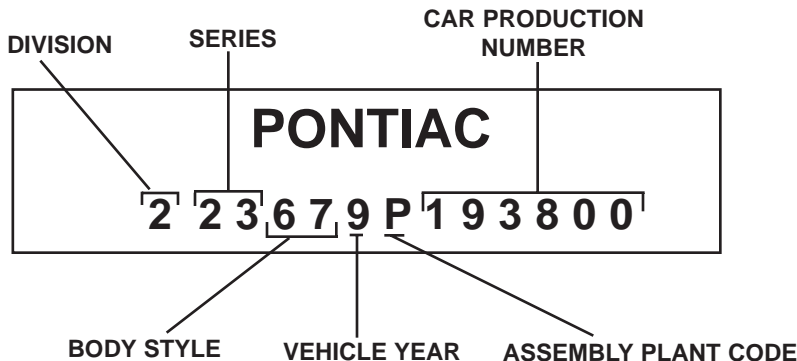


VEHICLE IDENTIFICATION NUMBER

This is referred to as the VIN number. This can be found stamped on a plate attached to the driver's side instrument panel, clearly visible through the windshield. This is also stamped on all transmissions and engines. VIN tags contain information on year, model, make, assembly plant and production sequence.



FIRST DIGIT - Identifies the GM Division (2 = Pontiac)

SECOND & THIRD DIGITS - Identifies the series
(23 = Firebird)

FOURTH & FIFTH DIGITS - Identifies the body style in each series

2 Door Sport Coupe.....	27
Hardtop Sport Coupe.....	37
Hardtop Coupe.....	57
Convertible.....	67

SIXTH DIGIT: Identifies the model year
1969.....9

SEVENTH DIGIT: Identifies the assembly plant.

Pontiac, MI.....	P
Linden, NJ.....	E
Southgate, CA.....	C
Kansas City, KS.....	X
Framington, MA.....	G
Fremont, CA.....	Z
Arlington, TX.....	R
Baltimore, MD.....	B
Lordstown, OH.....	U

LAST SIX DIGITS: Identifies the basic production numbers. V-8 start numbering at 100001 and up; 6 cylinder start numbering at 600001 and up.

PRODUCTION TOTALS

1967
2 door Hardtop coupe - 67,032
2 door Convertible - 15,528

1968
2 door Hardtop coupe - 90,152
2 door Convertible - 16,960

1969
2 door Hardtop coupe - 75,362
2 door Convertible - 11,649
Trans Am coupe - 689
Trans Am convertible - 8

1970
2 door Hardtop coupe - 35,543
Trans Am coupe - 3,196

1971
2 door Hardtop coupe - 51,008
Trans Am coupe - 2,116

1972
2 door Hardtop coupe - 28,665
Trans Am coupe - 1,286

1973
2 door Hardtop coupe - 41,511
Trans Am coupe - 4,802

1974
2 door Hardtop coupe - 63,474
Trans Am coupe - 10,255

1975
2 door Hardtop coupe - 56,789
Trans Am coupe - 27,274

Source: Standard Catalog of American Cars 1946-1975

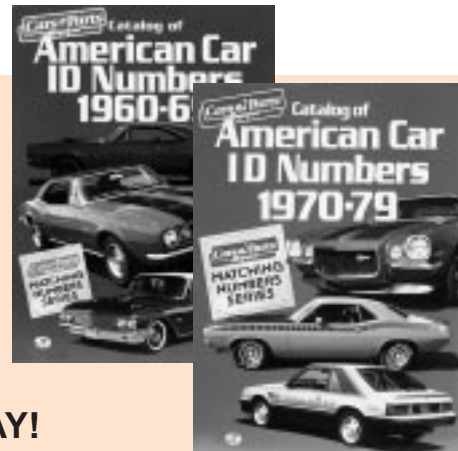
WANT TO KNOW MORE ABOUT YOUR CAR?

These books will help you in descrambling the VIN's on your special musclecar!

AMERICAN CAR ID NUMBERS 1960-1969
116647.....ea. 20.95

AMERICAN CAR ID NUMBERS 1970-1979
116075.....ea. 20.95

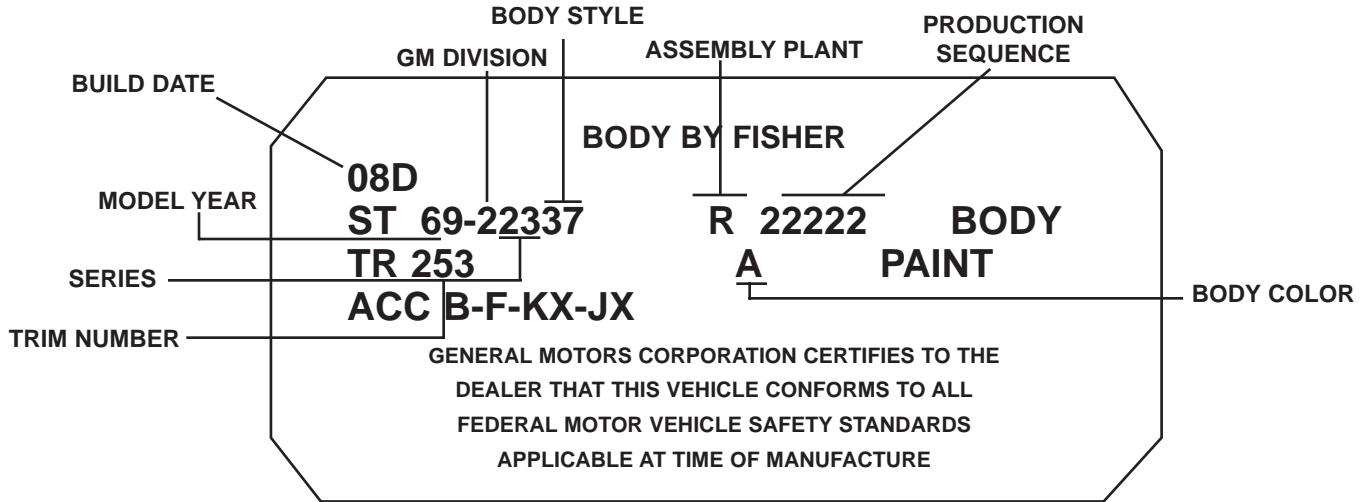
FIREBIRD CATALOG OF ID NUMBERS 1967-1993
122104.....ea. 20.95



CALL AND ORDER TODAY!

BODY NUMBER PLATE

Manufacturers give codes for year, model, assembly plant, interior trim colors and fabric combinations, exterior paint colors, sequence number and build date. The body number tag contains vital information. Model, body style, paint color, interior color and date of manufacture are all on this tag. On 1967-69 vehicles you can find this tag attached to the firewall near the master cylinder. On 1970-81 vehicles it's found on the driver's side below the windshield, under the rear section of the hood.



BUILD DATE - Identifies month and week of year vehicle was produced.

January	01
February	02
March	03
April	04
May	05
June	06
July	07
August	08
September	09
October	10
November	11
December	12
First Week	A
Second Week	B
Third Week	C
Fourth Week	D
Fifth Week	E

STYLE NUMBER - This is a combination of the year, series and body code.

2 Door Coupe	2337
2 Door Convertible	2367

ASSEMBLY PLANT - This is the production serial number of the body. The prefix letter denotes the plant in which the body was built.

Pontiac, MI	P
Arlington, TX	R
Baltimore, MD	B
Fremont, MI	Z
Kansas City, KS	X
Kansas City, MO	K
Linden, NJ	E
Southgate, CA	C
Lordstown, OH	U
Framingham, MA	G

TRIM NUMBER - This number gives you the key to the interior color and material.

Teal vinyl	230, 255
Gold vinyl	251, 257
Red vinyl	252, 258
Black vinyl	253, 272
Black vinyl	259, 269
Turquoise vinyl	261, 256
Parchment vinyl	262, 273
Parchment vinyl	260, 275

PAINT CODE - Gives you the key to paint colors used on the car. A two-letter code indicates the bottom and top colors respectively.

Starlight Black	A
Cameo Ivory	C
Alpine Blue	D
Aegena Blue	E
Nordic Blue	F
April Gold	G
Autumn Bronze	I
Meridian Turquoise	K
Aleutian Blue	L
Flambeau Burgundy	N
Springmist Green	P
Verdoro Green	Q
Solar Red	R
Primavera Beige	T
Nightshade Green	V
Mayfair Maize	Y

PRODUCTION SEQUENCE - Indicates the basic production number starting with 100001 and up.